



MESSAGE FROM THE FOUNDER

Dear Friends of New Triad,

Do you remember the end of Samuel Barber's Knoxville Summer of 1915? Those beautiful words of James Agee describe a child whose family will never tell her "who I am."

That has been the story of New Triad over the last five years. As we have grown from an idea, to an organization, from grass roots seminars to exciting new nationwide collaborations, we have much to celebrate in terms of honing our identity while expanding the community we serve.

I welcome you to enjoy the travelogue in this newsletter. Follow where New Triad has been invited over the last months to share communication skills not offered in traditional music schools or festival curricula. Enjoy hearing about young artists and established professionals being guided by New Triad specialists in creating performances that are more expressive in visual and emotional ways as well as upholding the greatest ideals in music making. I look forward to the next five years and thank you for taking the journey with New Triad.

To the new growth that spring offers,

Dr. Arlene Shrut
Founder and Artistic Director

Upcoming Performances

May 1, 6 PM

Paul Hall at The Juilliard School
"Walpurgisnacht"
featuring Julian Mintzer/soprano,
Carol Wong, pianist
Admission is free

May 6, 5:30 PM

VIM Tribeca Series at Icosahedron
Gallery
27 North Moore Street, NYC
"The Place You Never Left"
featuring Adam Marks/pianist
Tickets \$25/ \$10 students and seniors

June 10, 5:30 PM

Fifth Avenue Studio
303 Fifth Avenue at 31st Street, 10th fl.
"Theory of Threes"
featuring Fifth House Ensemble
Tickets \$25/\$10 students and seniors

Log onto www.newtriad.org for
details.

Hope to see you there!!



Beinecke Concert at Yale

March 1, 2007



Jennifer Beattie, soprano

Adam Marks, pianist

Photo by Mateusz Zechowski,
Studio TEO Recording Services

\$40,000 Program Grant Launches a New Trio of New Triad Recitals

In November of 2006, New Triad was honored to receive a generous anonymous donation exceeding \$40,000. This very special donor has seen first-hand what is needed to empower classical musicians and stepped forward to make New Triad performances possible. This gift enables the creation of:

"The Place You Never Left"
(featuring pianist, Adam Marks)

"Theory of Threes"
(featuring Fifth House Ensemble
members)
Melissa Ngan Snoza, flute
Jennifer Woodrum, clarinet
Herine Coetzee, cello

"Pick Your Passion"
(featuring Meagan Miller, soprano
& Spencer Myer, pianist)

"The Measure of Our Years" in a
re-worked format (featuring Jennifer
Beattie, soprano & Adam Marks,
pianist, which just bowed at Beinecke
Library at Yale on March 1st.



GETTING TO KNOW YOU NEW TRIAD CORE CONSULTANT



Ellen Rievman

FEATURED ARTICLE

“I never know what to do with my hands.” “The piano introduction to my piece is too long.” “I love to close my eyes when I perform.” “I wouldn’t dare look directly at anyone in the audience.” What do these remarks all have in common? They identify an artist who is not in a relationship with his audience, a performer who is delivering a monologue, rather than engaging in a dialogue. How can this impact the wisdom of maintaining traditional classical music performance practices?

Last March I had an opportunity to coach two artists, violinist and pianist, at Juilliard in New Triad’s “Audience Engagement Project.” How unusual, you might think, to ask these artists to be in a relationship with their audiences; they seem to be such solitary performers. The truth is, though, relationships are the essence of being on stage, the pathway to being

innovative, and to open this vista for the performer is to watch creativity in action. “What relationships exist?” you may ask. If you consider that in theatre, the experience of the audience is more important than that of the performer, you begin to understand. The performer has a relationship with himself, with the audience, with a colleague on stage, with the stage itself, with the material being performed. And that’s only the beginning. It’s lonely on stage if you’re up there all alone.

Imagine what would happen if the artist had such a relationship with the music that she knew exactly what she hoped to cause in her audience. Imagine how her specificity and clarity would land on the audience and allow them to engage their own memory banks. Imagine how the performer would have to investigate the audience to see how her words or ideas were landing; imagine the energy and reciprocity created by this interest. It’s vulnerable for the performer to make this invitation; it needs to be practiced and individualized, but it offers great rewards. The audience always knows when they have been included and have traveled a special journey with the artist on stage. It is for that journey that we go to the theatre; it is why live music-making can never be replaced.

What I am asking you to imagine is precisely what New Triad is committed to facilitating. In the workshop at Juilliard, the instrumentalists were awestruck by the permission to engage and what it brought to their performances. For the pianist in particular, who faces into the wing, rather than looking out into the audience, the experience to use his imagination to really SEE whatever he looked at, was a revelation. It kept him more immediate, more energized, and the audience was a part of this.

I had the pleasure of directing a “Recital Theater Workshop” for New Triad this past November in Manhattan. How could we continue incorporating these concepts of relationship when singing

poetry in a foreign language? Add to that the knowledge that most singers in their training (1) have been told specifically to NEVER look directly at the audience, but to look over their heads (a place I affectionately call “Singerland”); (2) have rarely put a song recital together based on anything but the obligatory inclusion of several languages; (3) have never considered that their ideas about the poetry and music could have relevance; (4) have never considered themselves in a real relationship with their collaborative pianists or their audiences. It’s easy to understand how much potential remains untapped.

I wanted an invitation extended to the audience whenever a team got up to perform; all the coaching was then directed at helping teams uncover their ideas about the songs. They worked beautifully, giving themselves incredible permission. The performance was moving and the connection among performers, music and audience was palpable. In a few weeks, thanks to the fertile energy of Arlene, I will have the pleasure of leading a workshop I have designed for the River City Brass Band: “Polishing the Brass.” It will be, of course, about creativity and how it can be uncovered and reinvigorated, leading to new successes and inspiration.



Ellen facilitating
River City Brass Band workshop

Getting back to those performers and the statements I mentioned at the beginning of the article... When you know what you want to say, you rarely have a problem with your hands, and in a warm relationship, time flies. Closing your eyes would become unthinkable in the middle of a conversation. And as for not looking directly at anyone, that would be positively rude. Clearly the vision of New Triad is making a difference at a perfect moment in the history of music-making-- just when audiences are ready to experience something new.

Biography

Ellen Rievman has a performing career spanning nearly three decades. For twenty-four years, as a member of the Metropolitan Opera ballet, she performed in over 100 productions alongside some of our greatest opera stars. Since leaving the Met in 1995, she has worked with singers to coach the drama, explore the text, and to incorporate these skills with gesture, movement, stagecraft, and physical eloquence.

A partial list of Ellen's accomplishments include teaching Master Classes for Apprentice Artists of the Santa Fe Opera, Sarasota Opera, National Opera Company, National Association of Teachers of Singing (NATS) National and Regional Conventions, Metropolitan Opera Guild, Manhattan School of Music, the Juilliard School, Mannes College of Music, Utah Festival Opera, UNC Greensboro, Lighthouse for the Blind, and New York Singing Teachers' Association (NYSTA) National Symposium. She also sits on the board of NYSTA. Ellen functioned as a consultant and coach to the Richard Tucker Foundation, assisting participants in the Foundation's annual competition. As a director, she has staged scenes, directed cabaret acts and recitals, produced and directed opera evenings of such contemporary composers as Seymour Barab, William

Mayer and Philip Hagemann. She has also directed concerts for, among others, NYSTA and the Baroque Aria Ensemble at Manhattan School of Music. Ellen coaches privately and also presents ongoing classes and workshops in audition preparation, dramatic presentation, song/aria interpretation and performance. She is an Associate at TAI Resources, The Actors Institute, in New York City.



Recital Theater Workshop *Fall 2006*

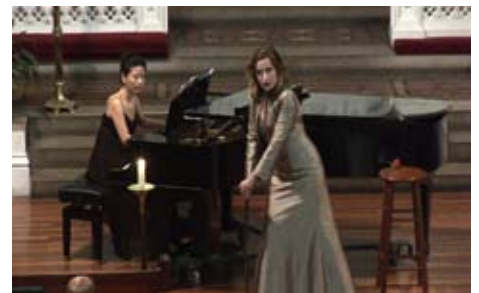
“Love, Longing, and Loss” was the theme of New Triad’s workshop showcase held on November 14th to a rapt audience. The outstanding singer pianist teams included: Amber Daniel/ soprano and Mary Bopp/ Pianist, Nacole Palmer/soprano and Kimball Gallagher/pianist, Laura Farmer/soprano and Kyung-A Yoo/ Pianist, Nani Kang/mezzo soprano and Jeeyoung Hong, and Siobhan Kolker/ soprano and Kyung-A Yoo. The five-week seminar focused on drama, movement, musical collaboration, poetry and speech guided by various members of the New Triad consulting team. The showcase performance was directed brilliantly by Ellen Rievman.



*Nani Kang, mezzo-soprano
and Jeeyoung Hong, pianist.*



*Nacole Palmer, soprano
and Kimball Gallagher, pianist*



*Siobhan Kolker, soprano
and Kyung-A Yoo , pianist*



**Eastern New York
Chapter of NATS
Fall Workshop**

Oct 28, 2006

*"Keys to Revitalizing the
Art Song Recital"*

The morning consisted of an informational workshop for voice teachers in which Dr. Arlene Shrut, New Triad's Founder and Artistic Director, vividly described her strong desire to create classical music performances that are "heart to heart." By nurturing young artists to relate to their audiences in ways that move beyond a "sound world" into a more visual and timely place, audiences can see as well as hear in order to feel. She then offered a timeline of New Triad's development and described the engaging and vital skills that New Triad consultants provide for musicians. To cap off the morning session, we saw New Triad's terrific promotional DVD entitled "Audience Engagement Program." Watching three supremely-gifted Juilliard musicians transform into focused communicators through music, work and action was a very inspiring way to end the morning session.

After lunch, Arlene accompanied and coached seven local singers ranging from high school to college age. Exploring things we often take for granted including the word implications and symbolism, phrase lengths, breaths, and punctuation marks enhanced each student's connection to the meaning of the text, phrases became more compact and audience members responded more emotionally to what was happening on stage.

We wish New Triad continued success as they endeavor to enlighten and strengthen the recital format in today's challenging world.

Anne Turner

*Secretary, Eastern Region NY Chapter:
National Association of Teachers of Singing
Senior Artist-in-Residence, Voice
Skidmore College*

**College Music Society
National Convention,
San Antonio**

September 2006



Community Engagement 101 Panel

From Left to Right:

Derek Mithaug, Career Development Director,

The Juilliard School,

Dr. Arlene Shrut, Artistic Director, New Triad,

Dr. Michael Millar, Faculty, Cal Polytechnic,

Dr. Jennifer Hayghe, Faculty, Ithaca College



Penn State University

November 2006

Penn State University was delighted to host Arlene Shrut's New Triad Masterclass as a part of the 2006 Allegheny Mountain Chapter/NATS Fall Conference and Auditions.

Through an introductory lecture explaining the Macro/Micro/Grid ideas of New Triad, and through her master class, the audience discovered a new means of approaching art song. Although the voice department at Penn State was already accustomed to using a text-based approach to art song, the New Triad approach brought much more detail to text analysis. Dr. Shrut focused on many of the grammatical aspects of the poetry, bringing a new micro level of interpretation to the singers and pianists.

Dr. Shrut's goal of unifying art, artists and audience, emphasizes the collaborative relationship between singer and pianist. During the master

class, Dr. Shrut directed specific questions to both the singer and the pianist in order to help them and the audience gain insight into the poetry and music. Her approach places the pianist on the same plane as the singer. This equality of performers creates a collaborative relationship in which both artists have an equal voice in which to convey the text and music.

Each of the artists performed in a more natural manner after working with Dr. Shrut. Justin Fyala, a senior voice performance major, brought a new freedom and humor to his singing. Meghan Curry found a new energy for her performance of Schubert's Der Musensohn, and Danya Katok refined her performance with a more specific sense of the direction of each idea. The singer/pianist teams created new connections with the audience and were able to fully engage the listeners through their performances.

On the evening previous to the master class, Dr. Shrut and Professor Jennifer Trost presented a recital of German and American songs in which we were able to see the Micro/Macro principles in action. Both Professor Trost and Dr. Shrut were absolutely committed to conveying the poetry, and demonstrated the New Triad ideas in performance.

Lindsay Isaac,

Masters degree student in Voice

Penn State University.

Yale Residency

November 2006 - March 2007

We had the distinct privilege to engage New Triad artists Jennifer Beattie, soprano, and Adam Marks, piano, here at Yale University's Department of Music for a mini-residency in conjunction with the curricular objectives of Yale College's Composition Seminar.

The mini-residency consisted of three parts. First, was a lecture demonstration in November 2006 at Yale for the members of the Composition Seminar during which Jennifer Beattie and Adam Marks lectured on composing songs for soprano and piano.

Second, song writing assignments for the student composers were designed by their teachers in conjunction with the students' interests. The students then composed the songs from November 2006 through January 2007.

Third, our New Triad mini-residency culminated with several presentations of the new songs, including: a New York preview concert on February 22, 2007 at The Piano Salon at Yamaha Artists Services, Inc.; a workshop rehearsal with the students here at Yale on February 28, 2007; and, a New Triad drama-recital March 1, 2007 at the Beinecke Rare Book and Manuscript Library, also here at Yale. On the second half of the concert, Jennifer and Adam delighted our audience with their "The Measure of Our Years" program.

The members of the Yale College Composition seminar were very enthusiastic about New Triad's mini-residency. They composed a total of twelve songs, all of which Jennifer and Adam critiqued and rehearsed for the composers, and then recorded and performed. Eight of the songs were premiered on the March 1st concert. The participating Yale College composers were Jacob First, Santana Haight, Rex Isenberg, Lee Case Klippel, Andrew Ly, Zachary Sandler, Daniel Schlosberg, and Austin Woerner. The participating faculty were Professors Kathryn Alexander and Michael Klingbeil, and Ms. Missy Mazzoli, our teaching assistant.

*Kathryn Alexander, Faculty Director,
Yale College Composition Seminar*



*Adam Marks
Working with Yale College composers*

Polishing the Brass Workshop

February 2007



*From Front to Back: David Cutler, pianist,
Lance LaDuke, Euphonium,
Denis Colwell, Music Director RCBB*



"The weekend with the people of NEW TRIAD FOR COLLABORATIVE ARTS gave the members of the River City Brass Band valuable techniques for addressing long-standing communication problems, and went a long way toward bringing everyone onto the same page. The new energy in the organization is palpable."

*Denis Colwell, Music Director
River City Brass Band*



*New Triad Facilitator, Ellen Rievman
Leading Group Exercise
Photos by Techniques Photography*



FEEDBACK

US and beyond

“I found teaching quite fun and much is credited to you and the unforgettable “New Triad” courses and performances. I would like to thank you again for the privilege and opportunities you gave me. I also try to perform as much chances as given, and I hope to have more concerts for New Triads if I can.”

Mee-Kyung Chang

New Triad artist and

Professor in Collaborative Piano, Korea

“I must tell YOU what a pleasure it was to have you visit Calvin. Your work was so very excellent and welcomed by our students...absolutely JUST what they need. Thanks so much for your energy, attitude, engagement, excellence, and kindness.

It was a great joy to watch and listen to you and them! I look forward to your soon return!!

Keith Brautigam,

Head of the Voice Department,

Calvin College

“New Triad was just what we needed around here. What a shot in the arm for all of us! My students are all re-examining their poems, working on opposites and sub-dividing sustained notes. I can’t tell you how nice it is to get beyond the mundane work of enforcing note learning. Your residency brought perspective to our students when they learned how much more there is to realize in a piece than just learning notes and rhythms. As always your energy and grace make the process seem like a gift rather than a task. Thank you, thank you!”

Dr. Kathryn Stieler

Voice Faculty

Grand Valley State University

“Those of us who are always teaching and “giving” really need to have the input from those working beyond our normal scope to inspire us and give us new ways of thinking about music making. You did that in a powerful way, and I am most grateful, both personally and for our NATS chapter.”

Susan Harwood, President

Eastern NY NATS



Recital Theater Workshop Fall 2006

“New Triad offers an innovative, creative approach to art song recitals the team helps develop interesting programs that engage the audience directly and challenge the artists to step beyond his/her comfort zone. This approach is beneficial to both veterans and novice performers.”

Laura Farmer, soprano

“If you are looking for a program to develop your artistry as a performer, this is the one.”

Kyung-A Yoo, pianist

“So much valuable information... a holistic approach to music, it was superior to most of my college experience. The knowledge could be used in other musical genres in addition to art song.”

Mary Bopp, pianist

“... great educators.. positive... affirming.. inspiring...lots of permission.”

Kimball Gallagher, pianist



Chamber Music America National Convention Education Residency Institute

January 11, 2007

New Triad was invited to facilitate CMA’s annual one-day workshop for chamber music professionals designed to enhance their community engagement skills. The morning session, led by Debra Wiley-Hart, included a very informative lecture and group exercises aimed at personally connecting with the musical score in powerful and emotional ways. The lively afternoon session, led by Adam Marks, helped break down the preparation process leading to effective speaking with audiences as part of the performing experience.

Following are some comments offered by the ERI participants:

“This needs to be a regular part of every performance class and was never offered in schooling. Overall, it is sorely needed at all levels and ages of performers, including all genres: chamber music, symphony, opera – all genres.”

Jill Marderness, bassoonist

Arizona Opera Orchestra & Bay View Music

Festival,

member Quintessence (chamber ensemble)

“A program that tries to connect you to all your senses, therefore to the music and to the audience.”

Hinrich Alpers, 2nd Laureate

Honens International Piano Competition 2006



POEM FOR YOUR PLEASURE

THE KEY (Gerald M. Ginsburg)

*A few kind words can save a life,
Can save a heart from breaking.
We fear to show emotion
Because we have the notion
That it's weak, not brave,
Not chic, and save
Our feelings for our pets,
Our plants to which we coo
To make them grow
When all we need to do is show
Each other
A little warmth,
A little love.
Compassion is not
Out of fashion
To those who understand
The need to hear at morn,
"It's good that you were born."

* the cup of human kindness

Printed by permission of the author
© Gerald M. Ginsburg 2006

Dedicated to Dr. Edward Greaney
and Mahon Bishop who inspired it.



SPECIAL NOTE

**Please go to our web site and
register your e-mail address with us.
We will send you our newsletter
and notification of upcoming concerts
by e-mail in the future.**

We look forward to hearing from you!



BOARD OF DIRECTORS

Allen Balla, President
Susan Lochner, Vice President
Dr. Kate Nesbit, Secretary
James Dunlop, Esq., Director
Mary Barker Evans, Director
Jamil French, Esq., Director
Edwin Lubin, Esq., Director
Dr. Arlene Shrut, Ex-officio

YOU NEED NEW TRIAD, AND NEW TRIAD NEEDS YOU!

What Would We Do Without You!?

The ball is rolling! New Triad has received its first large (\$40,000) individual donor give, and with these funds we have sponsorship for our 2007 performing season.

The significance of this is that, with a successful programming season underway, we have the track record to write credible major grant applications and solicit donations from large corporations – the monies that are essential to the growth of an arts organization, but yet are so difficult to obtain.

Now more than ever, your donations, no matter how large or small, named or anonymous, will speed the pace toward new and expanded workshop, recital, school, and artist-in-residence programming. Come join the ever growing community of believers in the concept of the New Triad; Art, Artists, and Audience!

Mary Evans
New Triad Board



Pinsational!

New Triad now has Logo Pins

These fashionable jewelry items in sterling silver, pewter and gold-tone are each designed using Troy Finamore's New Triad logo and manufactured under the supervision of New Triad marketing consultant Alexander Todd. They are notable accessories and great conversation starters!

*To purchase a pin for yourself or
as a special gift item*

*Contact Alexander Todd at
artandbusdevelop@earthlink.net*

Susan Lochner
Marketing Committee Chairman
New Triad for Collaborative Arts

ARTISTIC ADVISORY BOARD

Richard Adams – Vice President/Dean of Faculty,
Manhattan School of Music

Steven Blier – Co-Founder and Co-Director New
York Festival of Song

William Bolcom – International Composer,
premieres include Metropolitan Opera and Chicago
Lyric Opera

Eric Booth – Teaching artist and national consultant
on arts learning and arts organization leadership and
Former Artistic Director of Mentoring at Juilliard

Katherine Ciesinski – International Opera and
Recital Singer, Head of Voice Studies, Moores
School of Music, University of Houston

John Forconi – Chairman of the Accompanying
Department, Manhattan School of Music

Margo Garrett – Collaborative Piano Faculty at
the Juilliard School and U of MN, Director of Vocal
Programs, Stearns Institute for Young Artists, the
Ravinia Festival

Steven Gross – International opera and music
theater conductor. Former Music Director, Theater
des Westerns, Berlin

Bert Harclerode – Executive Director, Chamber
Music Sedona

Dimitri Hvorostovsky – International Opera and
Recital Singer

Mark Kaczmarczyk – Director of Opera &
Musical Theater, Ithaca College, and Founder
Detroit Oratorio Society

Derek Mithaug – Director of Career Development
and Co-Director of the Mentoring Program at The
Juilliard School

Joan Morris - Cabaret artist and faculty member,
University of Michigan

Peter Oundjian – Conductor and Artistic Director,
The Caramoor Festival

Matthew Ratto – President, Luxus Media, Inc.

Mark Riggleman – Executive Director, Suburban
Music Community Center, New Providence, NJ
and Former Director, 92nd Street Y School of
Music

Harvey Seifter – Executive & Artistic Director,
Flushing Council on Culture and the Arts Founder
& Director, Creativity Connection

Howard Sereda – Senior Vice President of
Centerbrook Financial

Paul Sperry – Director Joy in Singing, Faculty
member The Juilliard School and Manhattan
School of Music

Arnold Steinhardt – First Violinist Guarneri
String Quartet

CONTRIBUTION FORM

I am pleased to support **New Triad for Collaborative Arts** with my tax-deductible contribution of:

- \$1,000
- \$500
- \$250
- \$100
- \$50
- \$25
- Other

My method of payment:

- Check enclosed
- MasterCard
- Visa
- Discover

Credit Card Number _____

Expiration Date _____

3 Digit Code (see back of card) _____

Signature _____

Name: _____

Address: _____

City: _____

State: _____ Zip: _____

Phone: _____

E-mail: _____

- Please call me to discuss New Triad volunteer opportunities or corporate performances.

Telephone Number:

Please cut this page on the dotted line & send your generous donation to:

New Triad for Collaborative Arts
350 Fifth Avenue, Suite 3304
New York, NY 10118-0069

Yours can truly be
The Gift That Keeps Giving!

A SPECIAL THANK YOU TO OUR ANGELS

2006 Contributions

(received Jan 1 – Dec 16, 2006)

General Fund

\$25,000- \$49,999

Anonymous

\$1000-\$4999

Allen Balla

James Dunlop

Mary Barker Evans

Jamil French, Esq.

Nan Hughes

Susan Lochner

Howard Sereda

Arlene Shrut

Shining Sung

\$500-\$999

American Wagner Association

Anonymous

Barbara Shrut and Steven Gretenstein

\$100-\$499

Richard Elder Adams

Anonymous

Dr. and Mrs. Michael Barimo

Eric Booth

Rita Borden and Bert Harclerode

Donald B. Easum

Karen Smith Emerson

Dr Karvazy Eszter

Bridgette Fleming

Freda Gimpel

Jean Golden

Kenneth Greif

Cynthia Hoffmann

Willow Johnson

Dr. Richard Katz

Carol Kaimowitz

Linn Maxwell Keller

Phyllis and Saul Lowitt

Maria Messina

National Arts Club

Margaret Parsons

Fran Argiropoulos Pond

Eunice Poulos

Robert M. Reed

Magnus A.C. Roberson

Shirley Shrut

Paul Sperry

Under \$100

Jane Adler

Dr. William Ameen, Jr.

Maria Argyros

Dr. Janet Bachant

Lenore Balla

Michael Barimo

Sabrina Baronberg

Corradina Caporello

Margaret and Nick Cristiano

Judith Cloud

Dorothy Ann Conte

Sara Dougherty

Norman Duberstein

Shirley Epstein

Mr. and Mrs. A.L. Farmer

Vivian Fung

Elaine Gerstein

Jean Golden

Gabriel Gruder-Poni

Peter Halpern

Rosamond Hirschorn in memory
of Puli Toro

Jeffrey Hutterer

Mark Kaczmarczyk

Nancy Kandoian

Stephen Klym

John Knuppel

Virginia Perry Lamb

Antonia Lavanne

Susan Lochner

Dr. Ellen Markus

Meagan Miller

David and Linda Mintzer

Marion Mintzer

Helen Huse Ralston

Nanci Reichman

Jennifer Sgroe

Katrina Thurman

Judith Alban-Wilk and Bissy Roman

Kyung-A Yoo

▲ ▲ ▲

Newsletter Editor
Meryl Sher

Printing donated by
King and Spalding, LLP

Newsletter Design by
Finamore Design